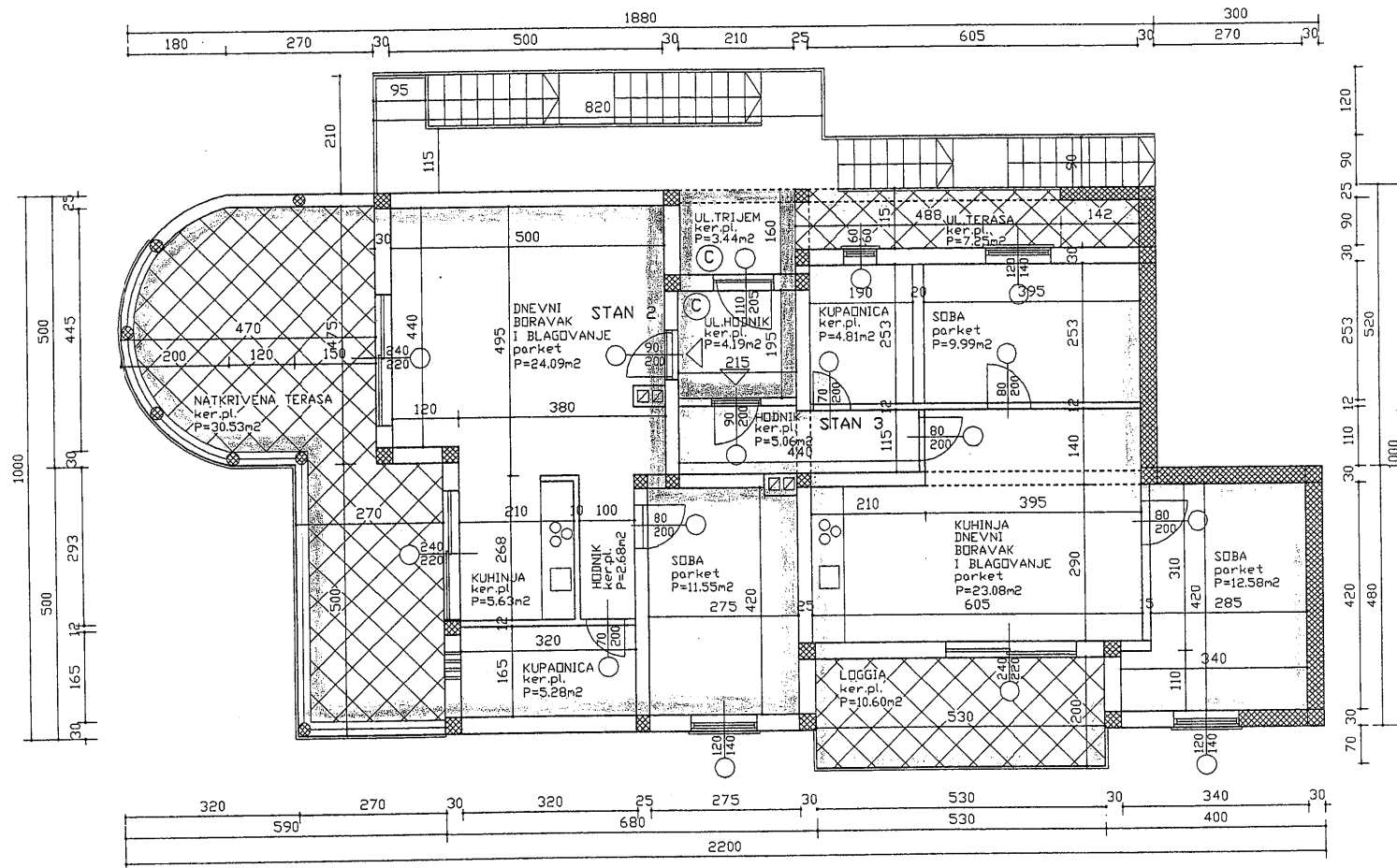


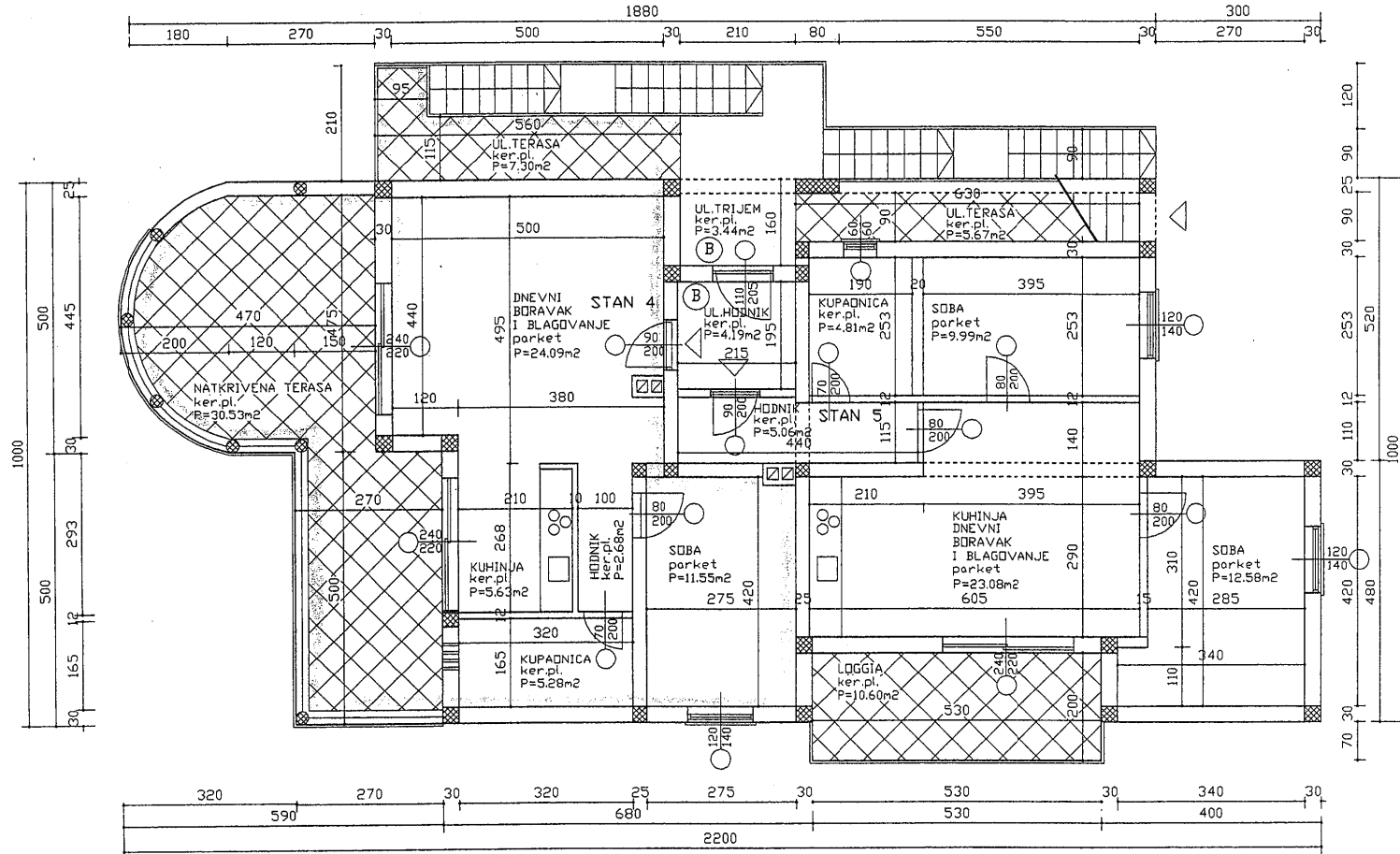
Crikvenica, tlocrt stanovi 2 i 3 (1. kat) - OBJEKT 1.



POVRŠINE: STAN (2) - P=79.76 m²
 STAN (3) - P=73.37 m²
 (C) - ZAJEDNIČKI PROSTOR
 STANA (2) I (3) - P=7.63m²

TLOCRT 1. KATA
 MJ 1:100

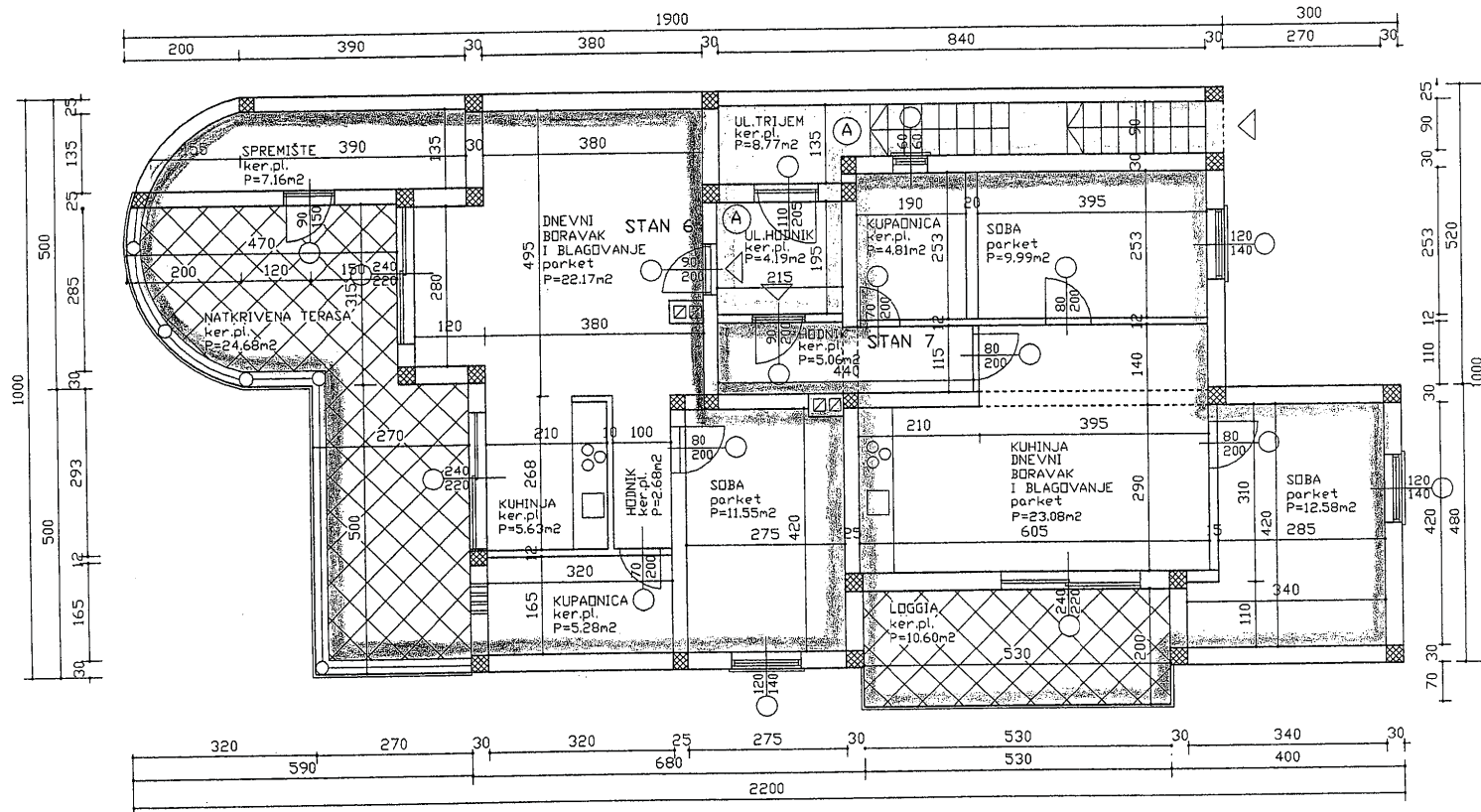
Crikvenica, tlocrt stanovi 4 i 5 (2. kat) - OBJEKT 1.



POVRŠINE: STAN (4) - P=87.06 m²
 STAN (5) - P=71.79 m²
 (B) - ZAJEDNIČKI PROSTOR
 STANA (4) I (5) - P=7.63m²

TLOCRT 2. KATA
 MJ 1:100

Crikvenica, tlocrt stanova 6 i 7 (potkrovlje) - OBJEKT 1.



TLOCRT POTKROVLJA

MJ 1:100

POVRŠINE: STAN (6) - P=79.15 m²

STAN (7) - P=66.12 m²

(A) - ZAJEDNIČKI PROSTOR

STANA (6) I (7) - P=12.96m²